

MARINER SANDS COUNTRY CLUB

A REPLAT OF A PORTION OF MARINER SANDS PLAT NO. 1

Being all of TRACT MF-2 AND all of TRACT RC-1 AND all of TRACT R/GA-1 of MARINER SANDS PLAT NO.1 as recorded in Plat Book 6, Page 47, public records of Martin County, Florida.

I, Louise V. Isaacs, Clerk of the Circuit Court of Martin County, Florida, hereby certify that this plat was filed for record in Plat Book 8, Page 21, Martin County, Florida, public records, this day of _____, 1980.

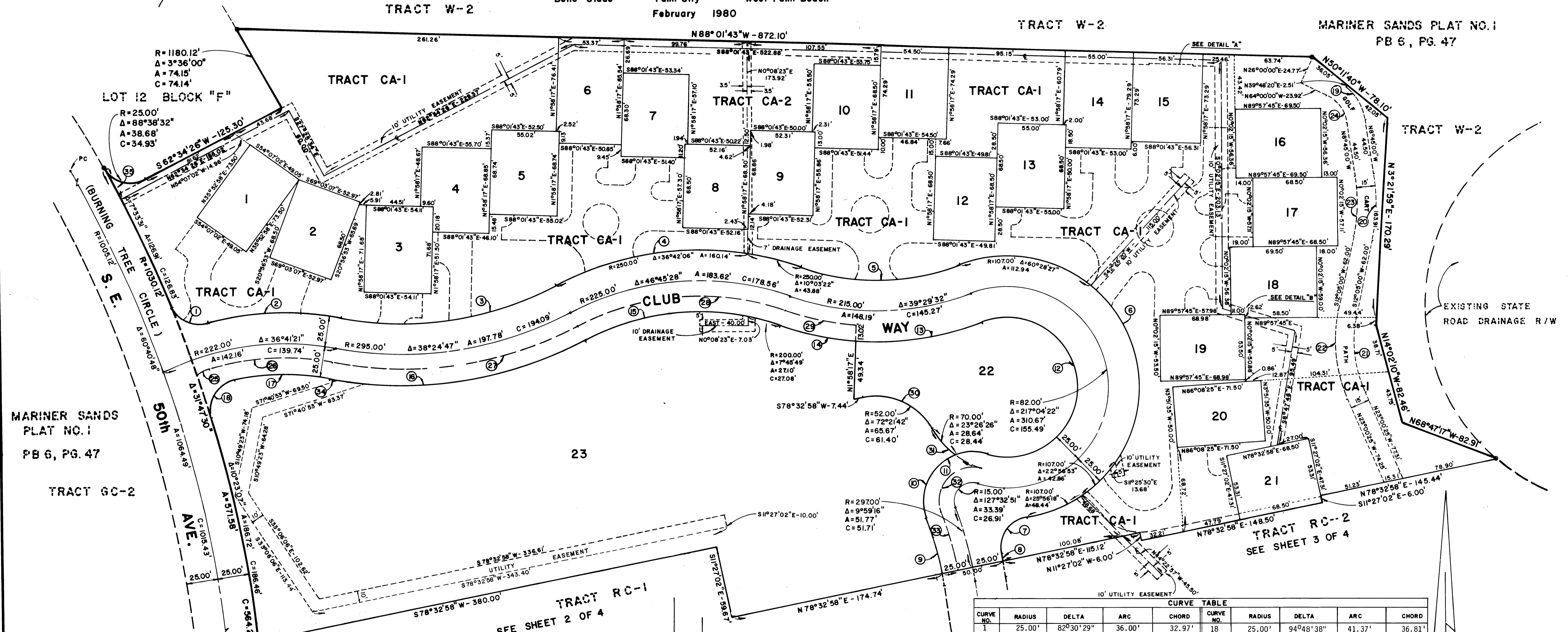
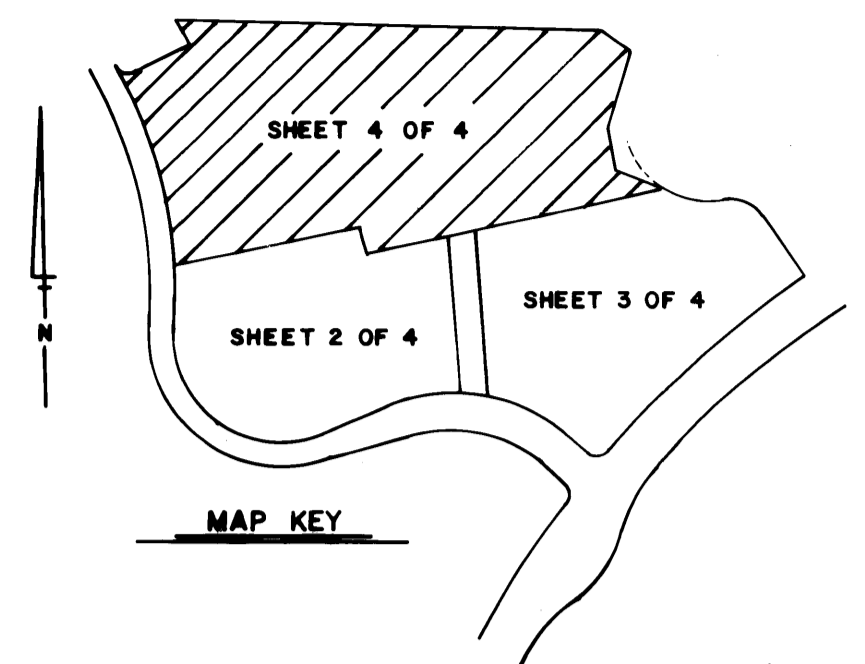
LOUISE V. ISAACS, CLERK
CIRCUIT COURT
MARTIN COUNTY, FLORIDA

By: _____
Deputy Clerk

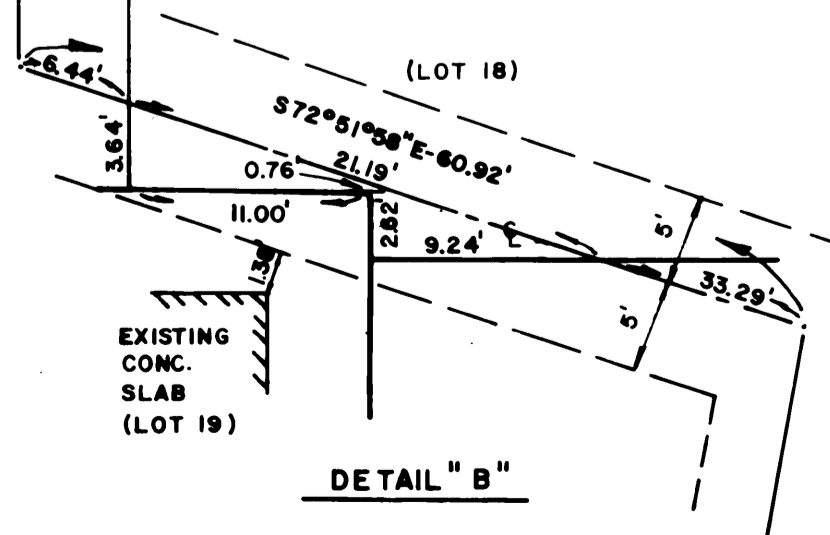
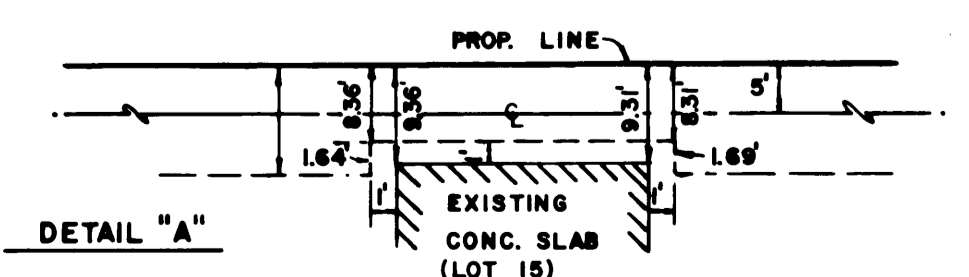
File No. _____

SHEET 4 OF 4 SHEETS
HUTCHEON ENGINEERS INCORPORATED
Civil Engineers and Land Surveyors
Belle Glade Palm City West Palm Beach
February 1980

THIS INSTRUMENT WAS PREPARED BY:
GEORGE C. YOUNG, JR.
HUTCHEON ENGINEERS INCORPORATED
1505 S.W. MARTIN HWY.
PALM CITY, FLORIDA



NOTES:
DENOTES (PCP) PERMANENT CONTROL POINT
DENOTES (PRM) PERMANENT REFERENCE MONUMENT
TRACT "CA" DENOTES COMMON AREA
TRACT "W" DENOTES WATER AREA
TRACT "GC" DENOTES GOLF COURSE AREA
TRACT "RC" DENOTES RECREATION AREA
DENOTES CURVE DATA AS SHOWN IN TABLE
PAVED DRIVES ARE DASHED LINES



CURVE NO.	RADIUS	DELTA	ARC	CHORD	CURVE NO.	RADIUS	DELTA	ARC	CHORD
1	25.00'	82°30'29"	36.00'	32.97'	18	25.00'	94°48'38"	41.37'	36.81'
2	247.00'	25°08'47"	108.41'	107.54'	19	44.00'	41°26'40"	31.83'	31.14'
3	270.00'	38°24'47"	181.02'	177.65'	20	149.00'	20°50'00"	54.18'	53.88'
4	250.00'	46°45'28"	204.02'	198.41'	21	106.50'	35°05'25"	65.23'	64.21'
5	190.00'	39°29'32"	130.96'	128.38'	22	121.50'	35°05'25"	74.41'	73.25'
6	107.00'	19°47'28"	358.17'	212.87'	23	134.00'	20°50'00"	48.72'	48.46'
7	25.00'	93°38'06"	40.86'	34.46'	24	29.00'	55°15'00"	27.97'	26.89'
8	322.00'	1°17'56"	7.30'	7.30'	25	25.00'	24°45'28"	10.80'	10.72'
9	272.00'	10°03'16"	47.73'	47.67'	26	210.00'	27°22'43"	100.35'	99.40'
10	40.00'	89°28'38"	62.47'	56.31'	27	307.00'	38°24'47"	205.82'	201.99'
11	40.00'	127°32'51"	89.05'	71.76'	28	213.00'	46°45'28"	173.82'	169.04'
12	57.00'	217°04'22"	215.95'	108.09'	29	227.00'	14°21'53"	56.91'	56.76'
13	240.00'	39°29'32"	165.42'	162.17'	30	52.00'	72°21'42"	65.67'	61.40'
14	200.00'	14°31'23"	60.83'	60.67'	31	70.00'	44°04'22"	52.53'	52.53'
15	200.00'	46°45'28"	163.22'	158.72'	32	27.00'	127°32'51"	60.11'	45.44'
16	320.00'	38°24'47"	214.54'	210.54'	33	285.00'	10°01'06"	49.83'	49.77'
17	197.00'	22°21'56"	76.90'	76.41'	34	197.00'	0°23'32"	2.19'	2.19'
					35	1030.12'	1°38'09"	29.41'	29.41'

